

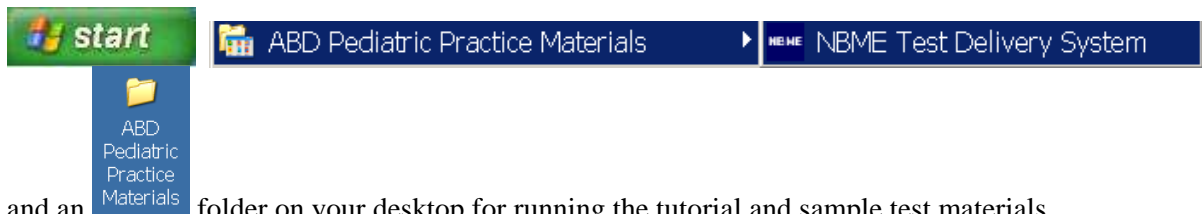
Instructions for Installing and Using the ABD Pediatric Certification Practice Materials

System and Software Requirements

- Windows® 98, 2000, or XP with administrator privileges
- WinZip version 10.0 or higher
- Internet Explorer version 6.0 or higher
- Intel® Pentium® or higher processor recommended
- 733 MHz or higher
- 128 MB RAM or higher
- 100 MB available on the hard drive
- Mouse
- Color display set to 24-Bit or True Color
- Screen resolution set to 1024 x 768

Installing the ABD Pediatric Certification Practice Materials


- Download the ABD Pediatric Practice Materials.zip file to your computer.
- Open the zip file and double-click the InstallFREDABD-P.exe file.
- Follow the on-screen prompts that will guide you through the installation.
- After the installation is complete, you should see the following entries on your program menu



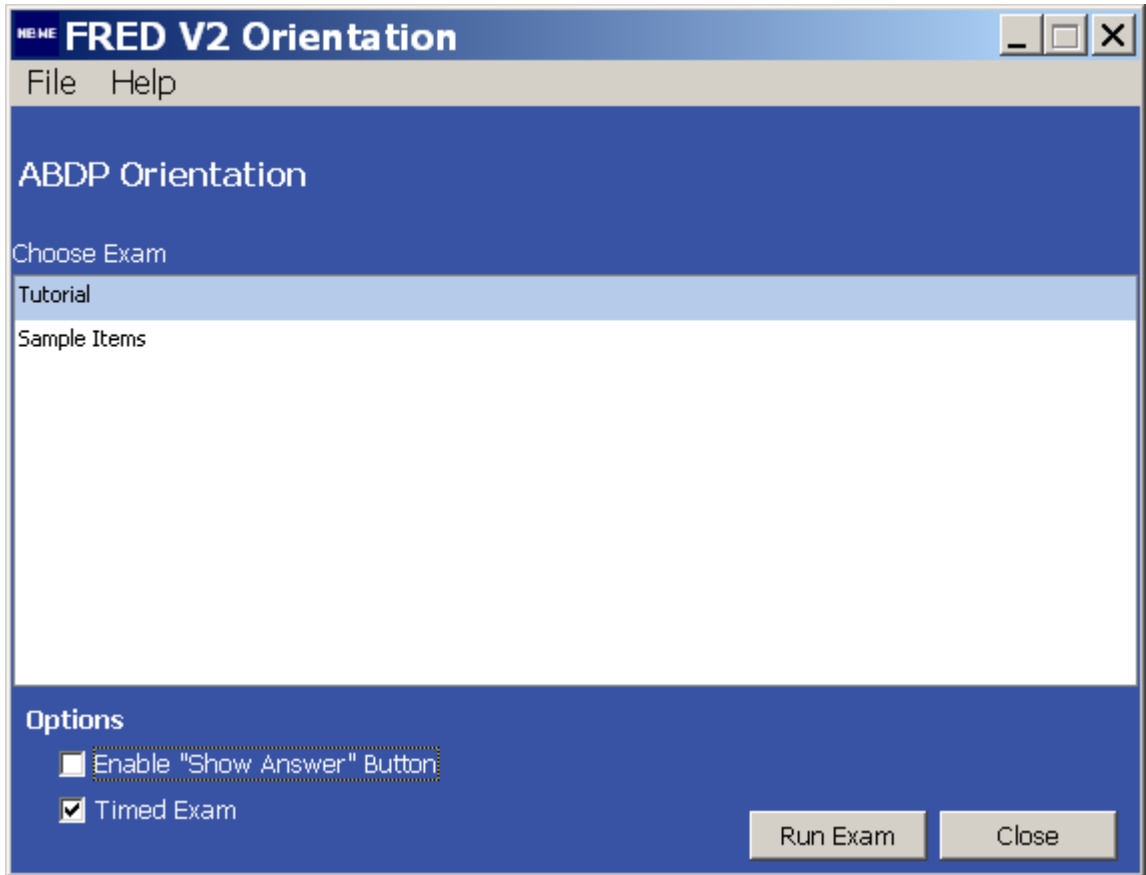
and an **ABD Pediatric Practice Materials** folder on your desktop for running the tutorial and sample test materials.

Running the ABD Pediatric Certification Practice Materials

- To start the software, double-click the ABD Pediatric Practice Materials folder on your desktop,

then double-click the  icon. You can also select ABD Pediatric Practice Materials, NBME Test Delivery System, on the program menu.

- The following screen is displayed:



- The orientation materials consist of two sections: Tutorial and Sample Items.
The tutorial section illustrates how the computerized test works and provides the opportunity to practice before taking the ABD Pediatric Certification Examination.
The sample items section includes 8 sample test questions.
- Two options for viewing the tutorial and sample items are available. The Enable “Show Answer” checkbox allows you to view the correct answer for each sample item in the tutorial and sample test. The Timed Exam checkbox allows you to view the tutorial and sample test under timed conditions that are similar to the live examination.
- To run the Tutorial section, select Tutorial, then click the Run Exam button.
- To run the Sample Items section, select Sample Items, then click the Run Exam button.
- When you are finished viewing the tutorial and sample items, click the Close button to end your practice session.